

# ***Durham Valley Scenic Byway***

## ***Corridor Management Plan***

**Open House  
September 27, 2008**

**Andy Cole, ERO  
Heidi Ochis, CTM**



*Consultants in Natural Resources & the Environment*

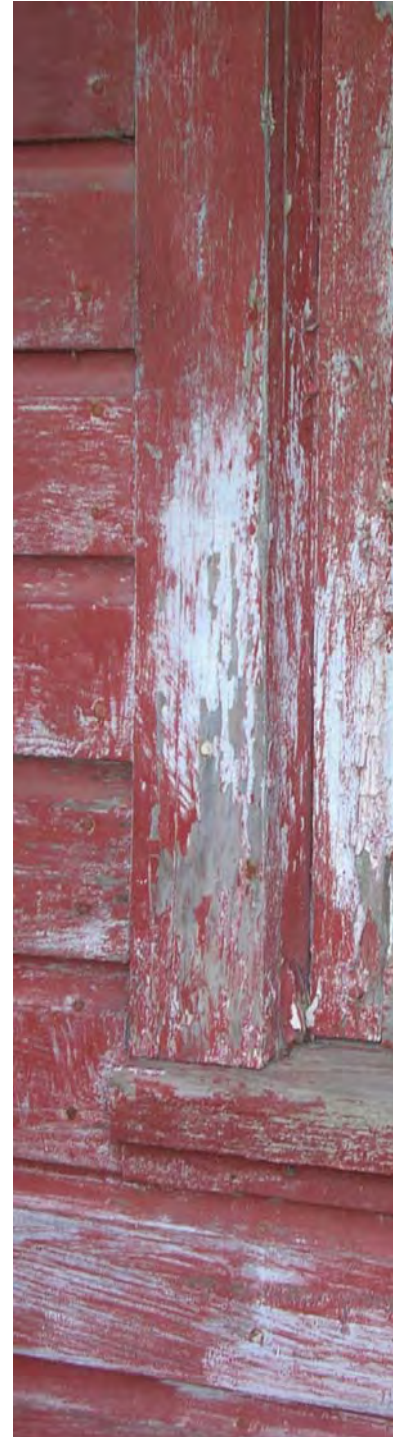
*Denver • Boise • Durango*



# ***Introductions***

## ***Scenic Byway Coordinating Committee***

- Richard Goldstein  
(Durham Valley Land Trust)
- Linda Sutton  
(Town of Durham Board & Town of Durham Historic Preservation Commission)
- Alan Beechert  
(Town of Durham Deputy Highway Superintendent)
- Barry Garfinkel  
(Association for the Preservation of the Durham Valley)
- Gunther Ohm  
(Greene County Legislature – retired)
- Daniel Clifton  
(Durham Valley Land Trust & Town of Durham Historic Preservation Commission)



# ***Presentation Outline***

## **1. General Background**

- National Scenic Byways Program
- New York State

## **2. Corridor Management Plan**

- Definition
- Elements

## **3. Durham Valley Scenic Byway**

- Background
- Resource Inventory
- Visual Analysis

## **4. Next Steps**

- **Open House until 11 am**





# 1. General Background

## *National Scenic Byways Program*

- Part of the U.S. Department of Transportation, Federal Highway Administration.
- Established under the Intermodal Surface Transportation Efficiency Act (ISTEA) of 1991; reauthorized in 1998.
- A grass-roots collaborative effort established to help recognize, preserve and enhance selected roads throughout the United States.

*“The program is about recognition, not regulation.”*



# *National Scenic Byways Program*

## *Vision*

"To create a distinctive collection of American roads, their stories and treasured places."

## *Mission*

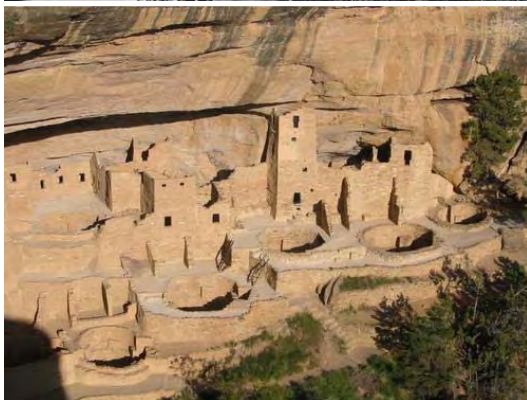
To provide resources to the byway community in creating a unique travel experience and enhanced local quality of life through efforts to preserve, protect, interpret, and promote the intrinsic qualities of designated byways.



# National Scenic Byways Program

## Recognition

- U.S. Secretary of Transportation recognizes certain roads as National Scenic Byways for their archaeological, cultural, historic, natural, recreational, and scenic qualities.
- Discretionary Grants program provides funding for byway-related projects each year.
- 125 designated Byways in 44 states.



General Background

# New York's Scenic Byways

## Designations

- In New York State, there are several types of types of corridors that fall under the Scenic Byways Program:
- State Scenic Byways are transportation corridors that are of particular statewide interest. They are representative of a region's scenic, recreational, cultural, natural, historic or archaeological significance to the State of New York.
- Corridors can be nominated by local interest groups for designation. When the program was created, some corridors automatically became Scenic Byways. These include:
  - Scenic Roads that were designated by the New York State Department of Conservation prior to the creation of the Scenic Byways Program;
  - Parkways that exhibit statewide scenic, recreational, cultural, natural, historic or archaeological significance;
  - North Country Touring Routes;
  - and the – Seaway Trail



## ***2. Corridor Management Plan***

**A Corridor Management Plan addresses the long term objectives and management of the byway; it ensures that the visions and goals of the byway are met and sustained.**



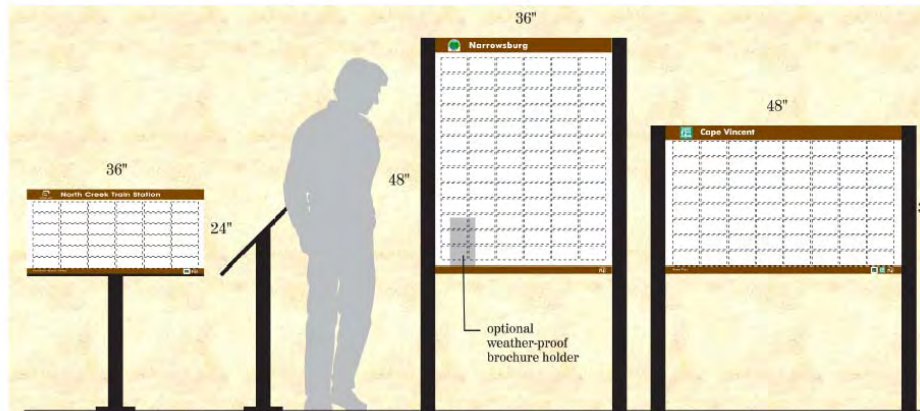


## *Elements of the Plan*

- Vision and Goals Statement
- Public Participation
- Marketing and Promotion
- Financial Resources



- Stewardship



- Resource Interpretation



- Tourism Development

## Elements of the Plan

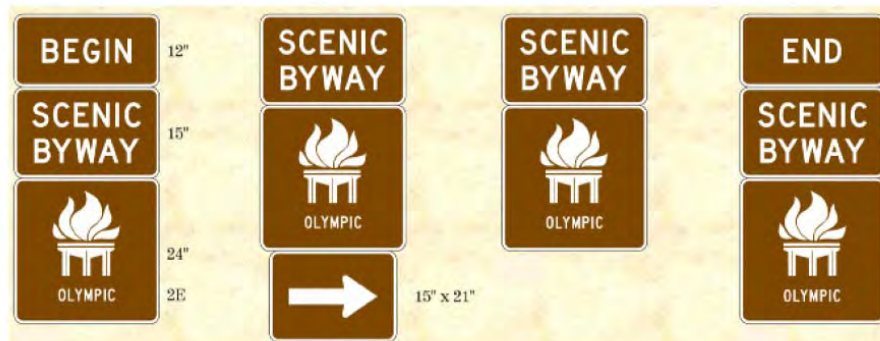


- Transportation Safety



- Sign Inventory

### STANDARD NYSB SIGN HIERARCHY



**A** BYWAY IDENTIFICATION (TYP.) WITH DIRECTIONAL ARROWS WHERE NEEDED  
12" wide (Provided by NYSDOT) Logo shown is sample of an approved byway logo.  
Durham Scenic Byway would need a color logo which could translate well into white.

- Sign Requirements

- Support and Implementation
- Marketing and Promotion
- Ban on New Off-Premise Advertising Signs
- Resolutions of Support



### ***3. Durham Valley Scenic Byway***





**Project Area**

**Legend**

- Primary Tourist Access Highways
- Designated State Scenic Byway
- Hamlet District
- Conservation Easement
- State Forest
- Municipal Park

**Map Labels:** TOWN OF RENSSELAERVILLE, DURHAM, WEST DURHAM, CORNWALLVILLE, EAST DURHAM, HERVEY STREET, DURSO CORNER, EAST WINDHAM, SOUTH DURHAM, TOWN OF WINDHAM, TOWN OF GREENVILLE, FREEHOLD, SUNSIDE. Roads: 354, 367, 145, 20, 10, 21, 22, 27, 67, 75, 81, 145, 20, 23, 145, 20, 31, 32, 403. Creeks: Catskill Creek, Schoharie Creek, Cornwallville Creek, Thorp Creek, Bowers Creek, Freehold Ford Rd. State Forests: Mount Pisgah, Mt. Nebo, Mt. Hayden, Mt. Zoar, Windham Pe Wild Forest. Municipal Parks: Windham High Peak.

**3 Durham Valley Scenic Byway**

### 3 Durham Valley Scenic Byway



## *Background*

- Durham Valley Scenic Byway includes 21 miles of mostly contiguous New York State designated Scenic Roads in the Town of Durham, encompassing roads in the Hamlets of Durham and Cornwallville.
- Designated Scenic Roads “of extraordinary scenic quality” by Environmental Conservation Commissioner Thomas C. Jorling on January 11, 1991.
- The 21 miles represent the most mileage so designated in a single town since the inception of the program in 1985.



# Purpose

## *Corridor Management Plan*

*The corridor management plan will serve as a resource management guide and present strategies to conserve and interpret the Durham Valley Byway's diverse resources, as well as promote tourism and economic development.*



**3** Durham Valley Scenic Byway

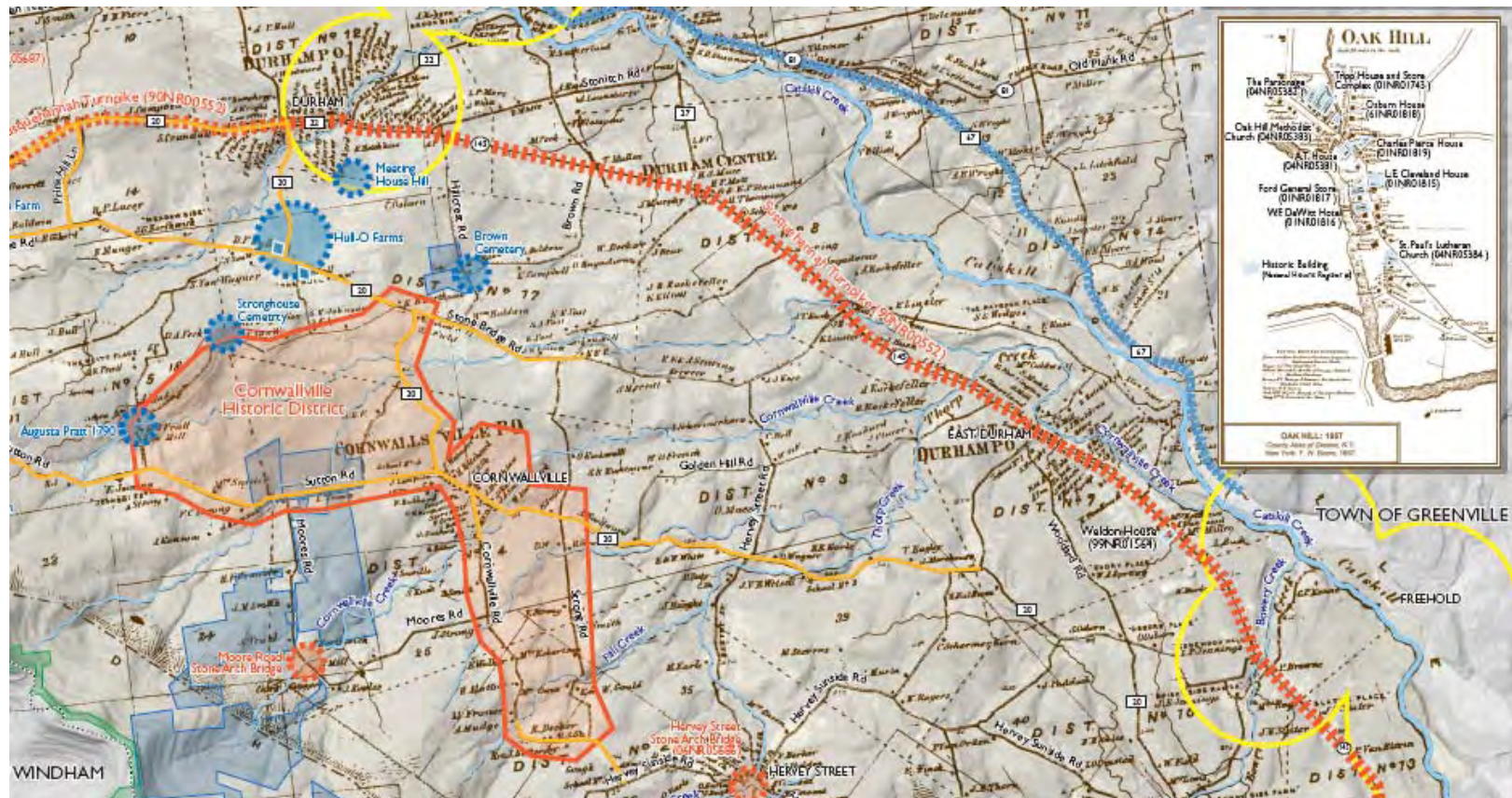


# Inventory – Historic Resources





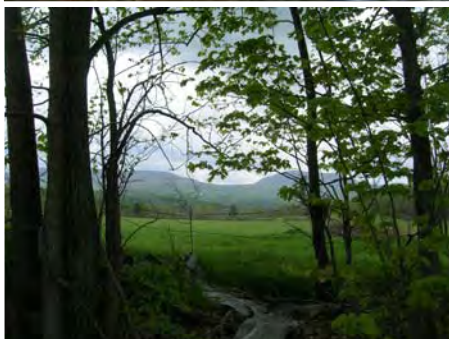
# Inventory – Historic Resources



**3 Durham Valley Scenic Byway**



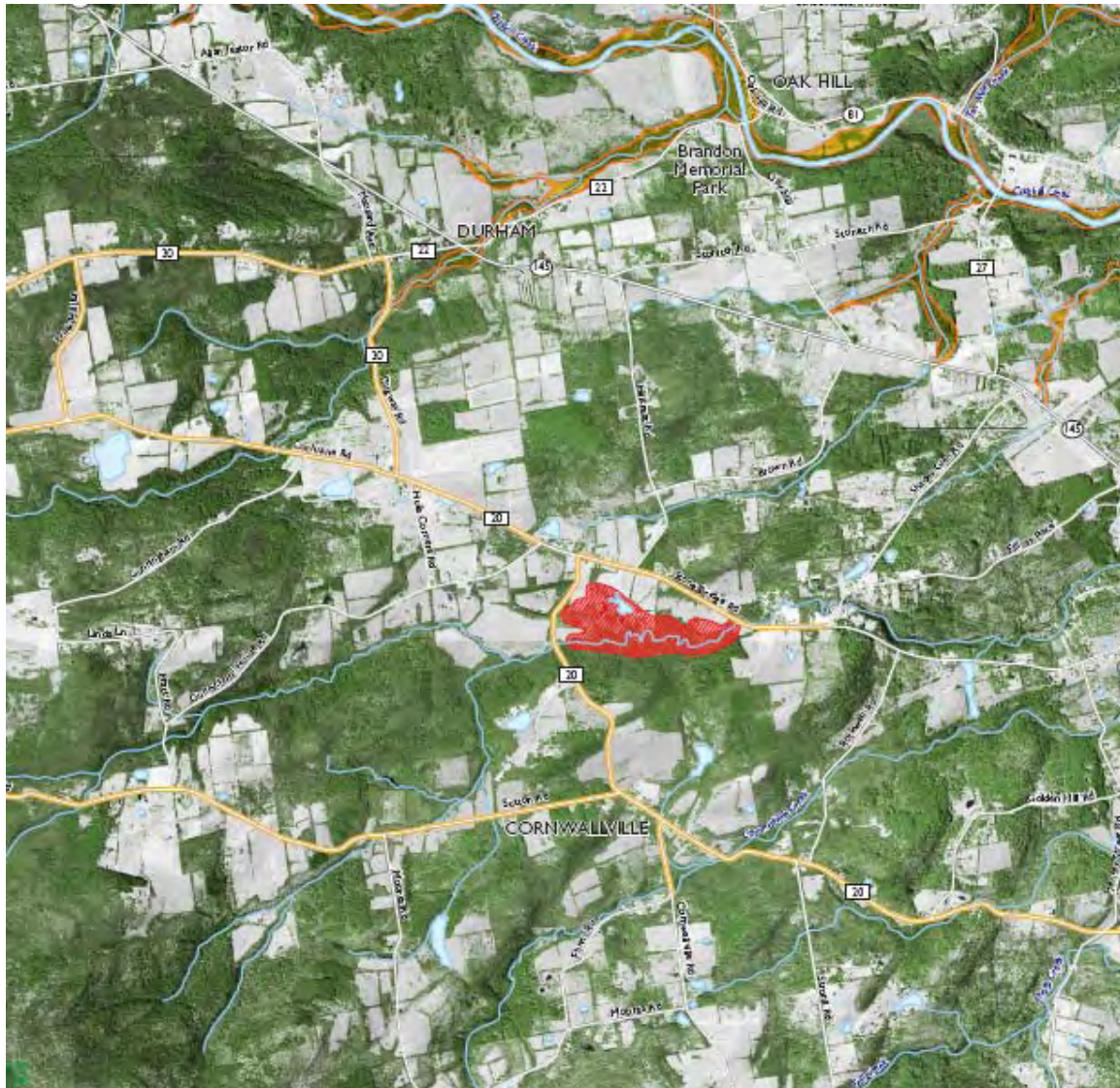
# *Inventory – Natural Resources*



**3** *Durham Valley Scenic Byway*



# *Inventory – Natural Resources*



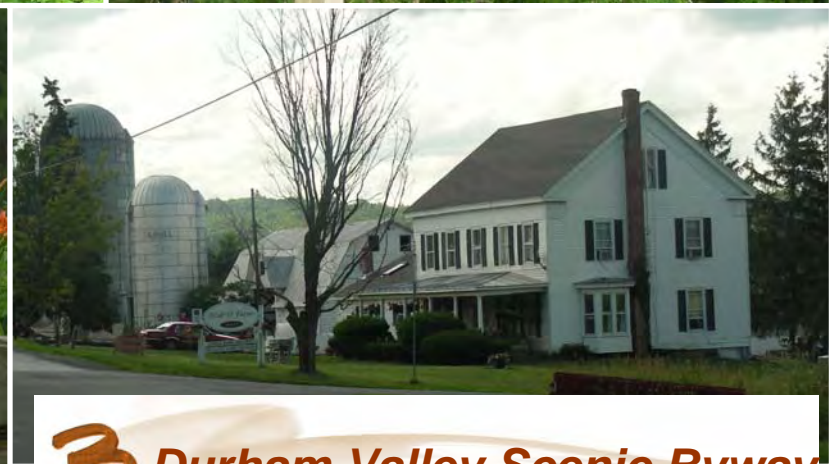
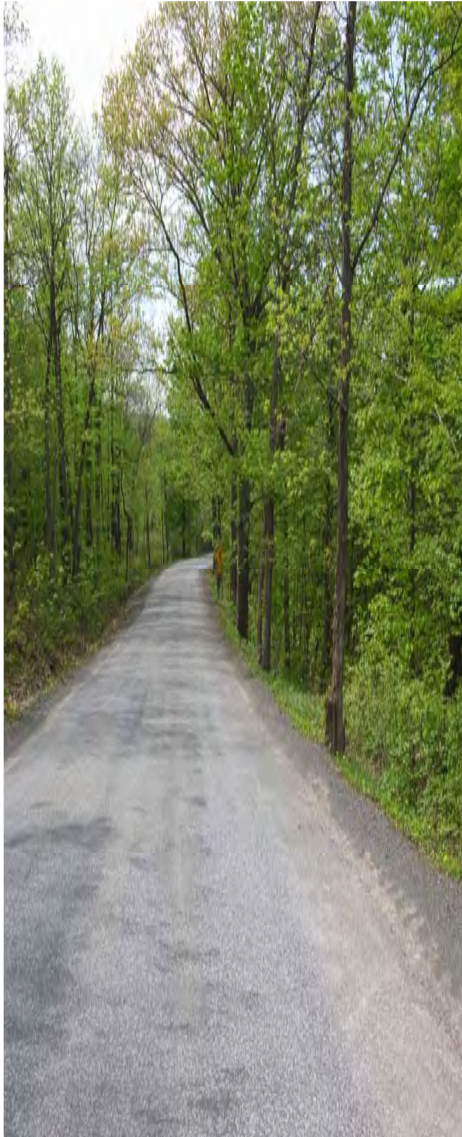


# *Inventory – Agricultural Resources*





# *Inventory – Recreation Resources*



**3** *Durham Valley Scenic Byway*

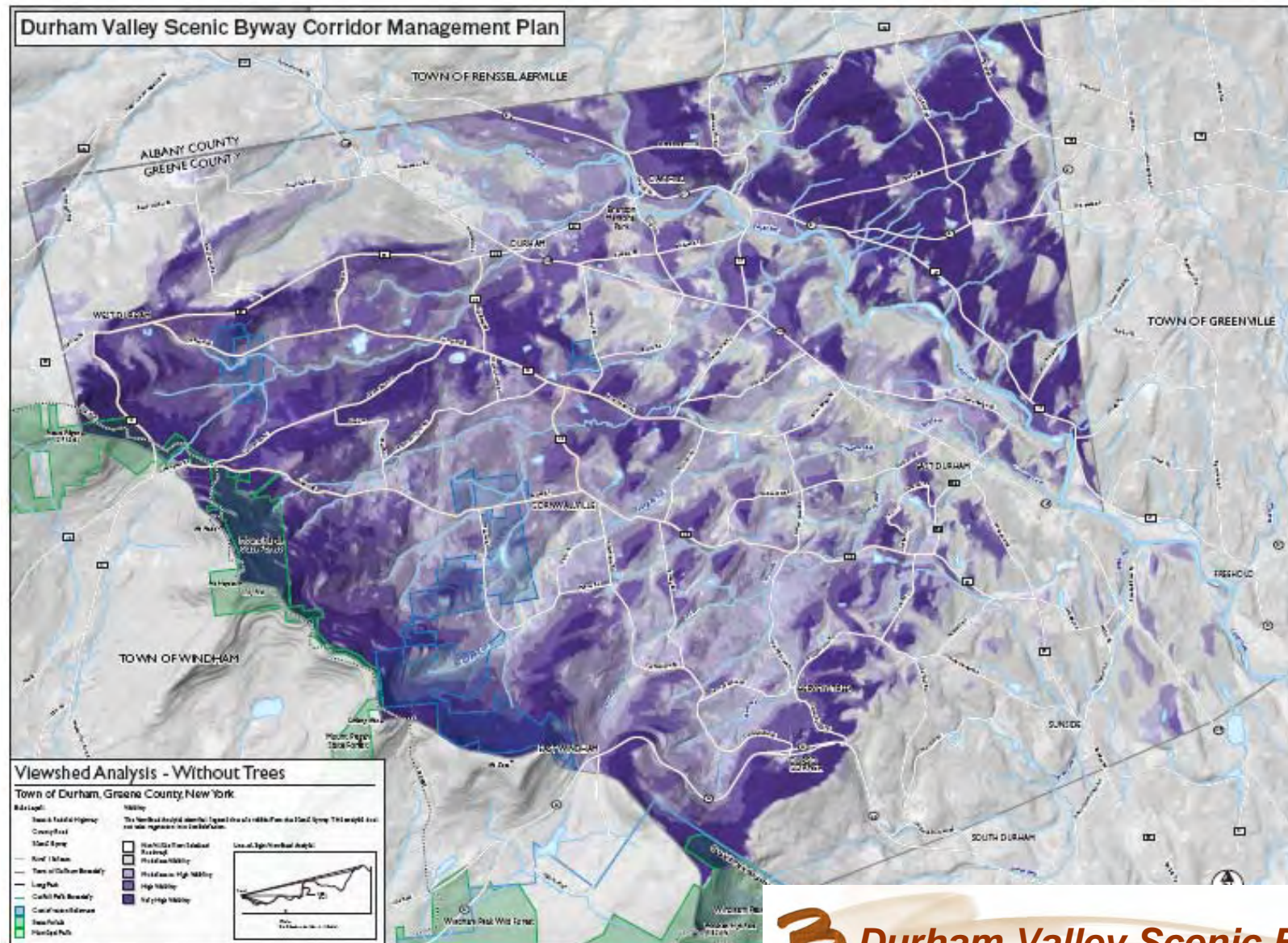


# *Inventory – Scenic Resources*



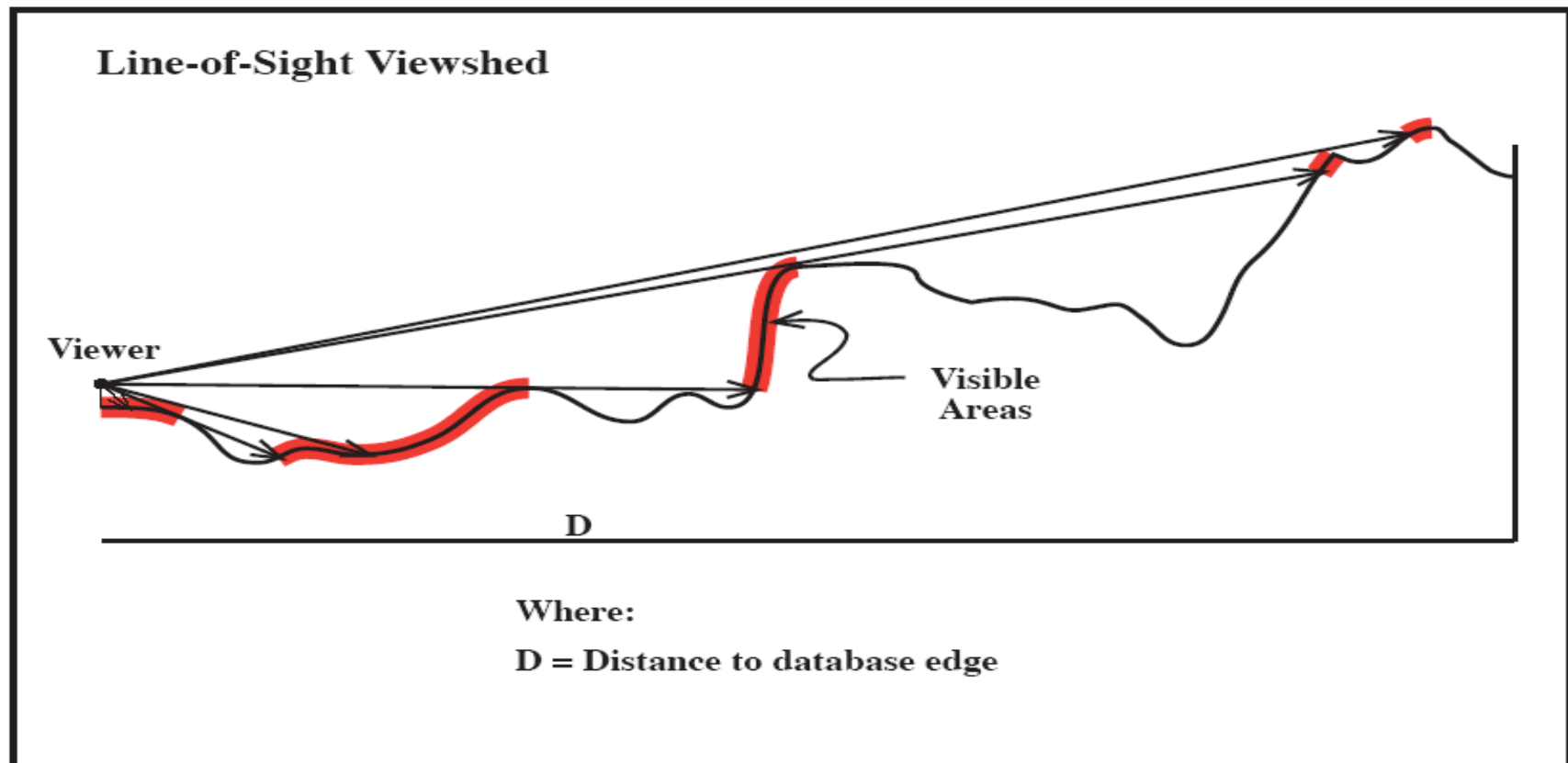


# Visual Analysis





# Visual Analysis







# Next Steps

- ✓ *Data Gathering and GIS Mapping*
- ✓ *Inventory and Assessment*
- ✓ *Community Open House – September 27*

*Draft Management Plan – October 31*

*Byway Coordinating Committee Review*

*Community Open House – November*

*Final Management Plan – December*







## ***Thank You***

Durham Valley Scenic Byway Coordinating Committee

c/o Durham Valley Land Trust

P.O. Box 7

Cornwallville, New York 12418

<http://www.eroresources.com/Durham/index.html>

Andy Cole

ERO Resources

1842 Clarkson Street

Denver, Colorado 80218

[acole@eroresources.com](mailto:acole@eroresources.com)

[www.eroresources.com](http://www.eroresources.com)

Heidi Ochis

Computer Terrain Mapping

P.O. Box 4982

Boulder, Colorado 80306

[hiho@ctmap.com](mailto:hiho@ctmap.com)

[www.ctmap.com](http://www.ctmap.com)

